



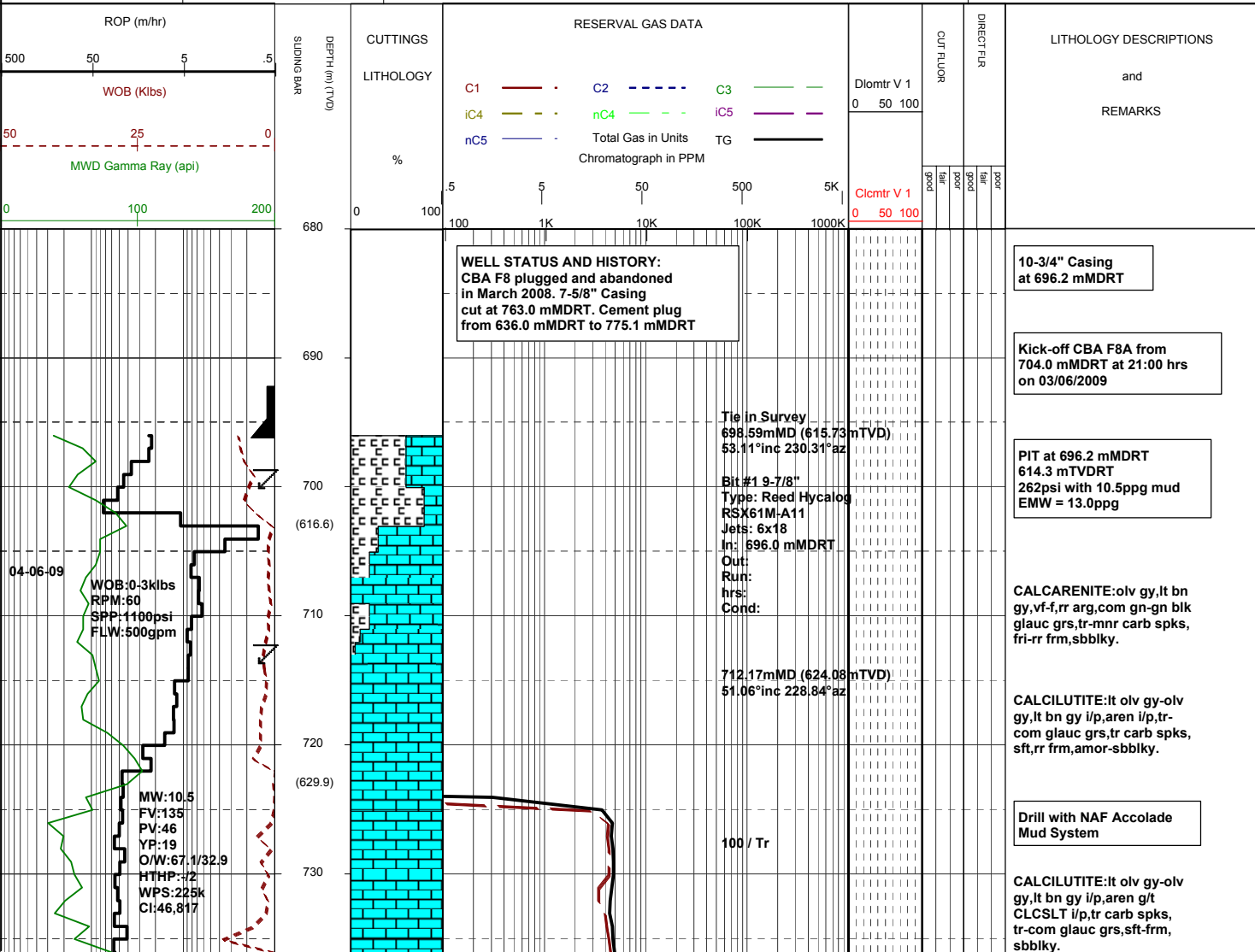
MASTERLOG

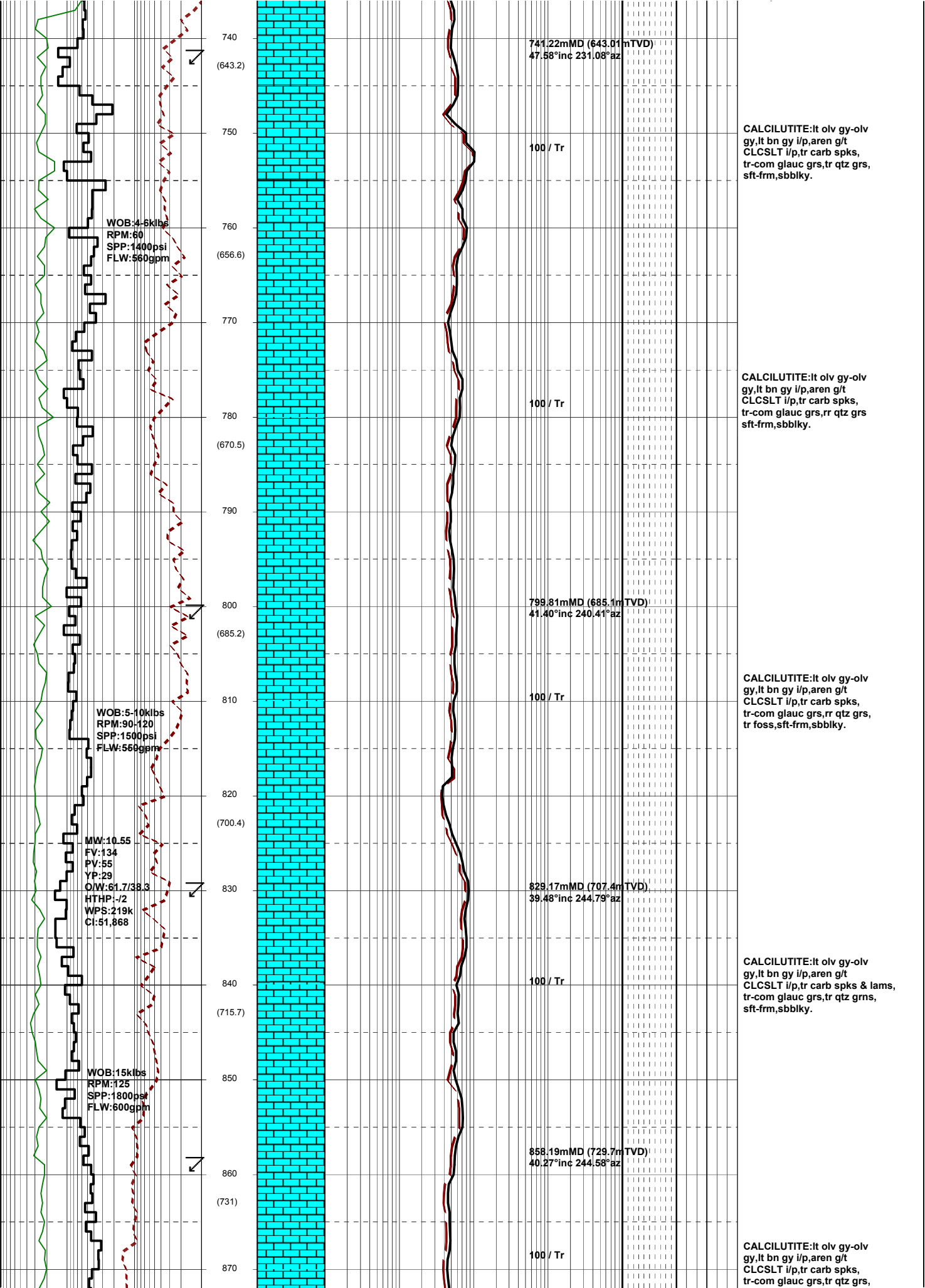
Cobia F8A

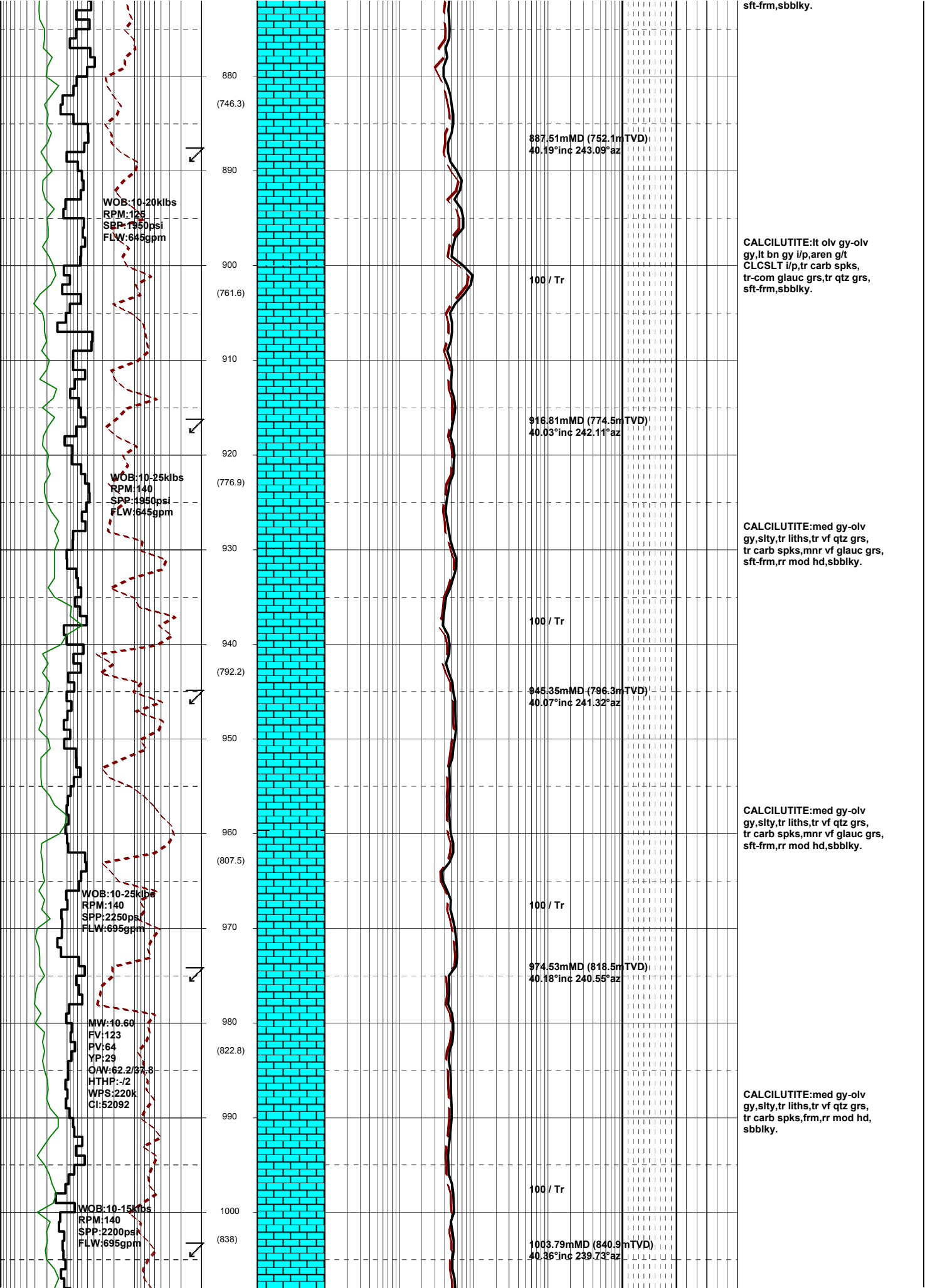


GENERAL	SURFACE POSITION	HOLE / CASING INFO	DATE / DEPTH	ENGINEERS
Country : AUSTRALIA	Longitude : 148°18'32.473" E		Kick off Date: 03/06/2009	Mark Smith
Permit : VIC / L5	Latitude : 38°26'57.529" S	9-7/8" Hole to	Total Depth Date:	Phil Rady
Field : FTA / HLA	MGA Co-ord X : 614226.00 mE		Total Depth:	Colin Chadwick
Basin : GIPPSLAND	MGA Co-ord Y : 5743519.34 mN	10-3/4" Surface Csg at 696.2 mMDRT	True Vertical Depth:	Phil Rady
Well Type : DEVELOPMENT	RT to MSL : 41.0 m	7" Production Csg at	Log Scale : 1/ 500	Leigh Dower
Rig Name : Nabors 175	RT to Sea Bed : 120.0 m			Kepa O'Reilly

ABBREVIATIONS		LITHOLOGY LEGEND				ENGINEERING LEGEND			
MW	Mud Weight	WOB	Weight on Bit (Klbs)	Claystone	Marl	Bryozoa	Glauconite	Casing shoe	RFT
FV	Funnel Viscosity	RPM	Rotations Per Min	Siltstone	Limestone	Radiolariae	Pyrite	Casing Top	MDT
PV	Plastic Viscosity	FLW	Flow Rate (gpm)	Sandstone	Dolomite	Echinoids		Survey	Mud gain
YP	Yield Point	SPP	Pump Pressure (psi)	Shale	Coal-lignite	Foraminiferae		Sidewall core	Mud loss
O/W	Oil/Water Ratio	RR	Re-Run Bit	Conglomerate	Volcanics	Cement		Core	Sliding Bar
WPS	Aq. Phase Salinity	TG	Trip Gas						
HPHT	Fluid Loss	CG	Connection Gas						
Cl	Chlorides	BG	Background Gas						
Incl	Inclination	DGP	Drilled Gas Peak						
Az	Azimuth	MM	Mud Motor						







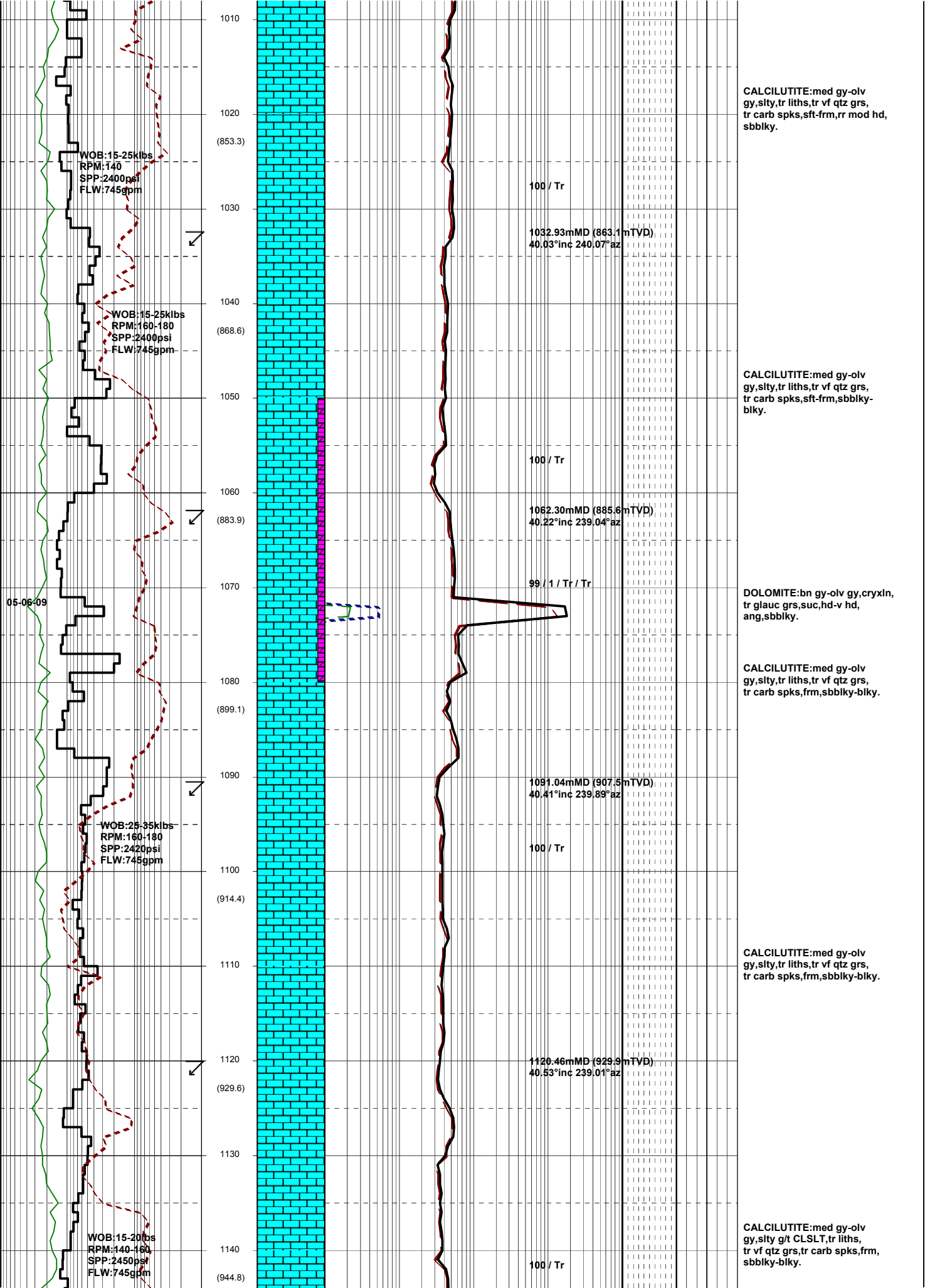
sft-frm,sbbiky.

CALCILUTITE:lt olv gy-olv gy,lt bn gy i/p,aren g/t CLCSLT i/p,tr carb spks, tr-com glauc grs,tr qtz grs, sft-frm,sbbiky.

CALCILUTITE:med gy-olv gy,slty,tr liths,tr vf qtz grs, tr carb spks,mnrv vf glauc grs, sft-frm,rr mod hd,sbbiky.

CALCILUTITE:med gy-olv gy,slty,tr liths,tr vf qtz grs, tr carb spks,mnrv vf glauc grs, sft-frm,rr mod hd,sbbiky.

CALCILUTITE:med gy-olv gy,slty,tr liths,tr vf qtz grs, tr carb spks,frn,rr mod hd, sbbiky.



CALCILUTITE: med gy-olv
 gy, slty, tr liths, tr vf qtz grs,
 tr carb spks, sft frm, rr mod hd,
 sbbkly.

CALCILUTITE: med gy-olv
 gy, slty, tr liths, tr vf qtz grs,
 tr carb spks, sft frm, sbbkly-
 bkly.

DOLOMITE: bn gy-olv gy, cryxln,
 tr glauc grs, suc, hd-v hd,
 ang, sbbkly.

CALCILUTITE: med gy-olv
 gy, slty, tr liths, tr vf qtz grs,
 tr carb spks, frm, sbbkly-bkly.

CALCILUTITE: med gy-olv
 gy, slty, tr liths, tr vf qtz grs,
 tr carb spks, frm, sbbkly-bkly.

CALCILUTITE: med gy-olv
 gy, slty, g/t CLSLT, tr liths,
 tr vf qtz grs, tr carb spks, frm,
 sbbkly-bkly.

WOB: 15-25klbs
 RPM: 140
 SPP: 2400psi
 FLW: 745gpm

WOB: 15-25klbs
 RPM: 160-180
 SPP: 2400psi
 FLW: 745gpm

WOB: 25-35klbs
 RPM: 160-180
 SPP: 2420psi
 FLW: 745gpm

WOB: 15-20klbs
 RPM: 140-160
 SPP: 2450psi
 FLW: 745gpm

100 / Tr

1032.93mMD (863.1mTVD)
 40.03°inc 240.07°az

100 / Tr

1062.30mMD (885.6mTVD)
 40.22°inc 239.04°az

99 / 1 / Tr / Tr

100 / Tr

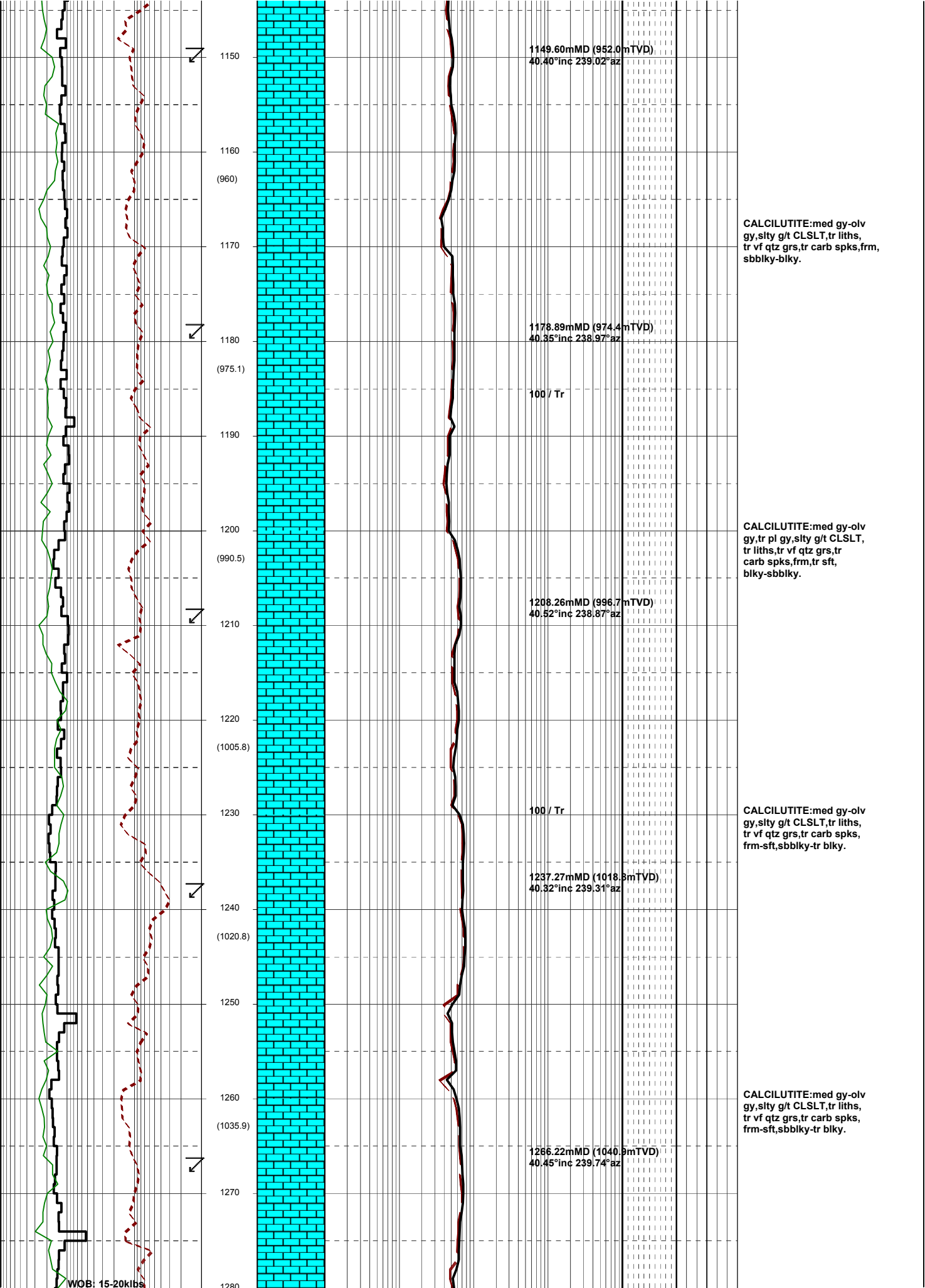
1091.04mMD (907.5mTVD)
 40.41°inc 239.89°az

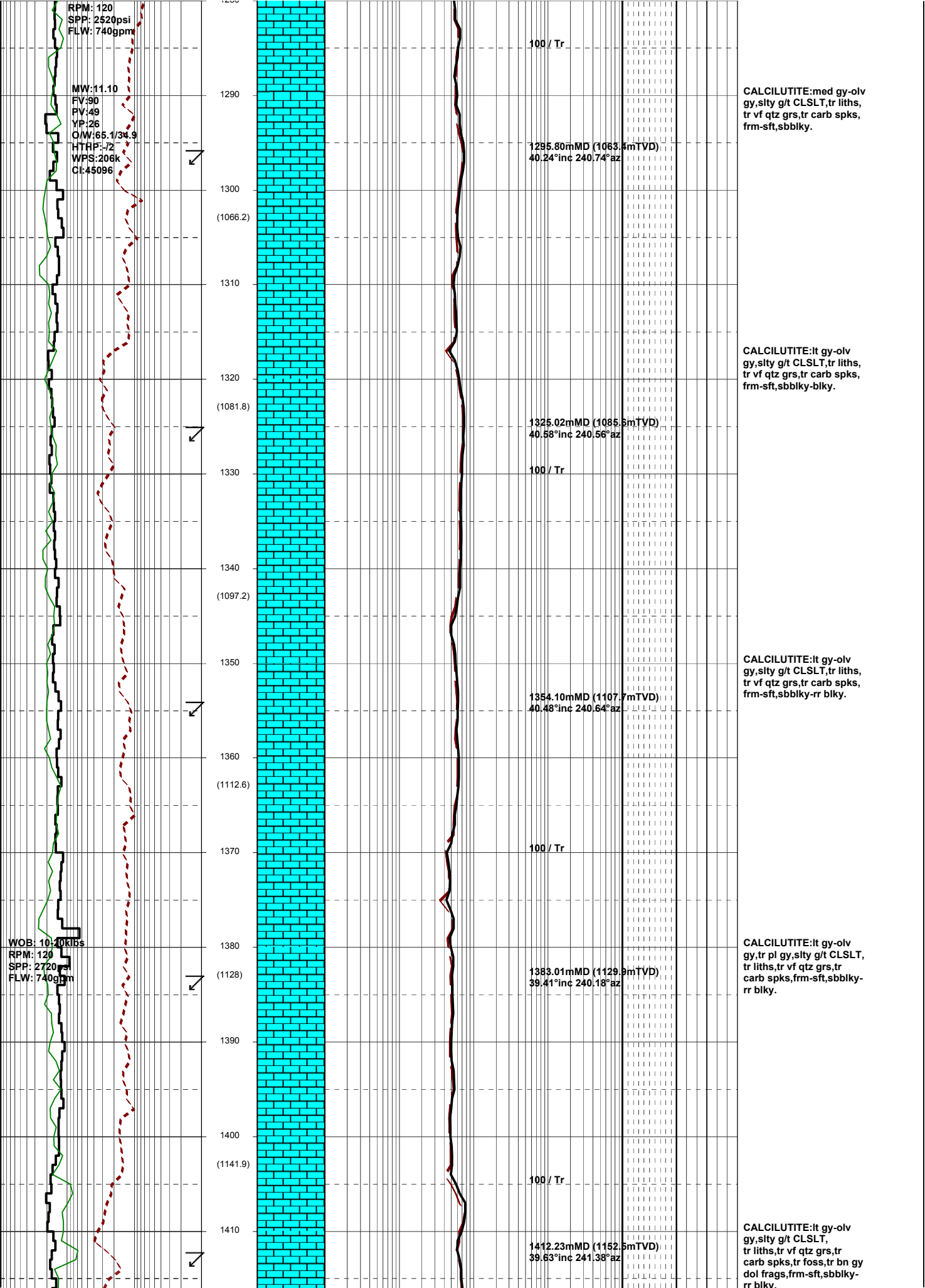
1120.46mMD (929.9mTVD)
 40.53°inc 239.01°az

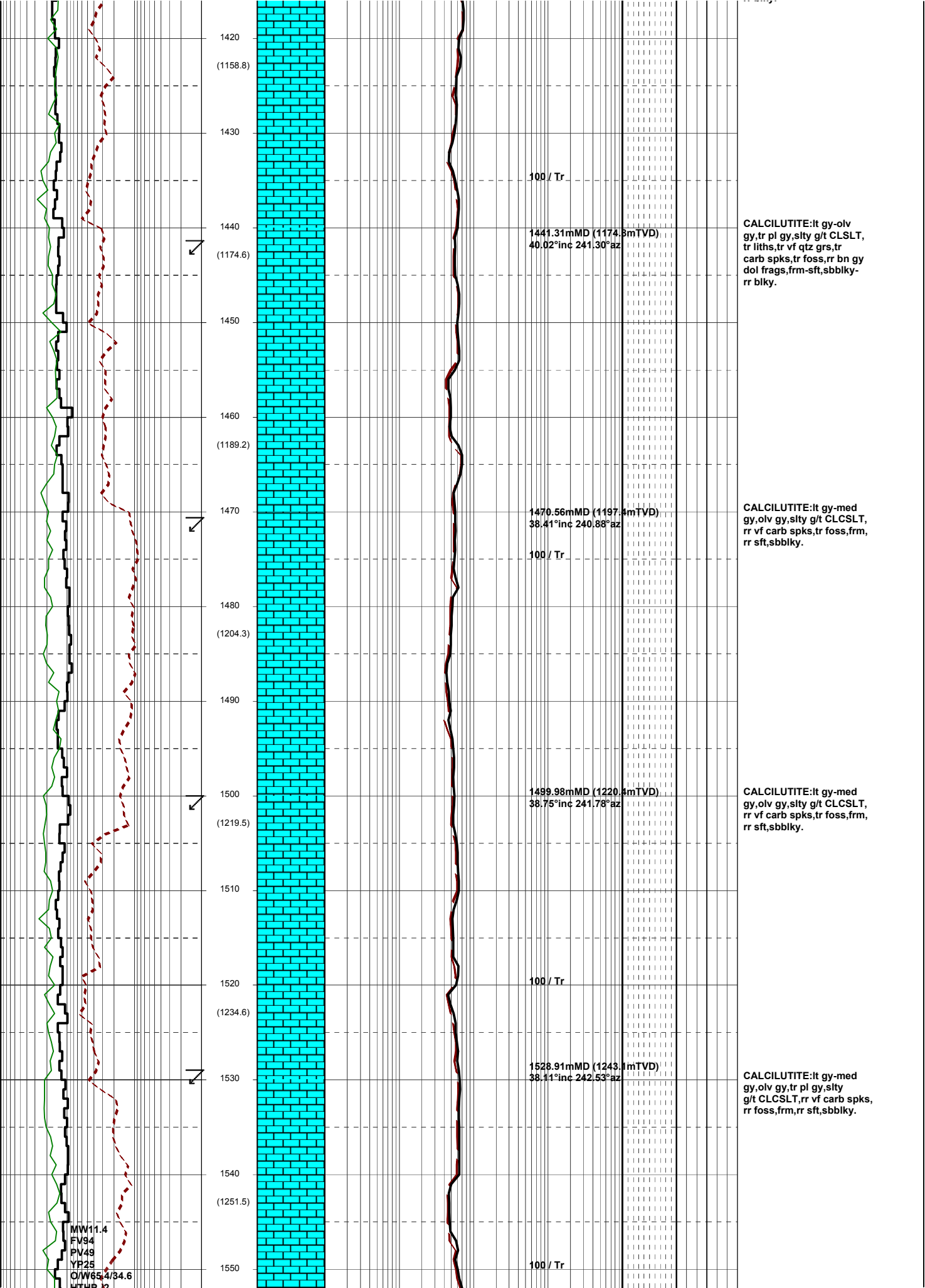
100 / Tr

05-06-09

1010
 1020
 (853.3)
 1030
 1040
 (868.6)
 1050
 1060
 (883.9)
 1070
 1080
 (899.1)
 1090
 1100
 (914.4)
 1110
 1120
 (929.6)
 1130
 1140
 (944.8)







1420
(1158.8)
1430
1440
(1174.6)
1450
1460
(1189.2)
1470
1480
(1204.3)
1490
1500
(1219.5)
1510
1520
(1234.6)
1530
1540
(1251.5)
1550

100 / Tr

1441.31mMD (1174.8mTVD)
40.02°inc 241.30°az

CALCILUTITE:lt gy-olv
gy,tr pl gy,silty g/t CLCSLT,
tr liths,tr vf qtz grs,tr
carb spks,tr foss,rr bn gy
dol frags,frm-sft,sbbiky-
rr blkly.

1470.56mMD (1197.4mTVD)
38.41°inc 240.88°az

CALCILUTITE:lt gy-med
gy,olv gy,silty g/t CLCSLT,
rr vf carb spks,tr foss,frm,
rr sft,sbbiky.

100 / Tr

1499.98mMD (1220.4mTVD)
38.75°inc 241.78°az

CALCILUTITE:lt gy-med
gy,olv gy,silty g/t CLCSLT,
rr vf carb spks,tr foss,frm,
rr sft,sbbiky.

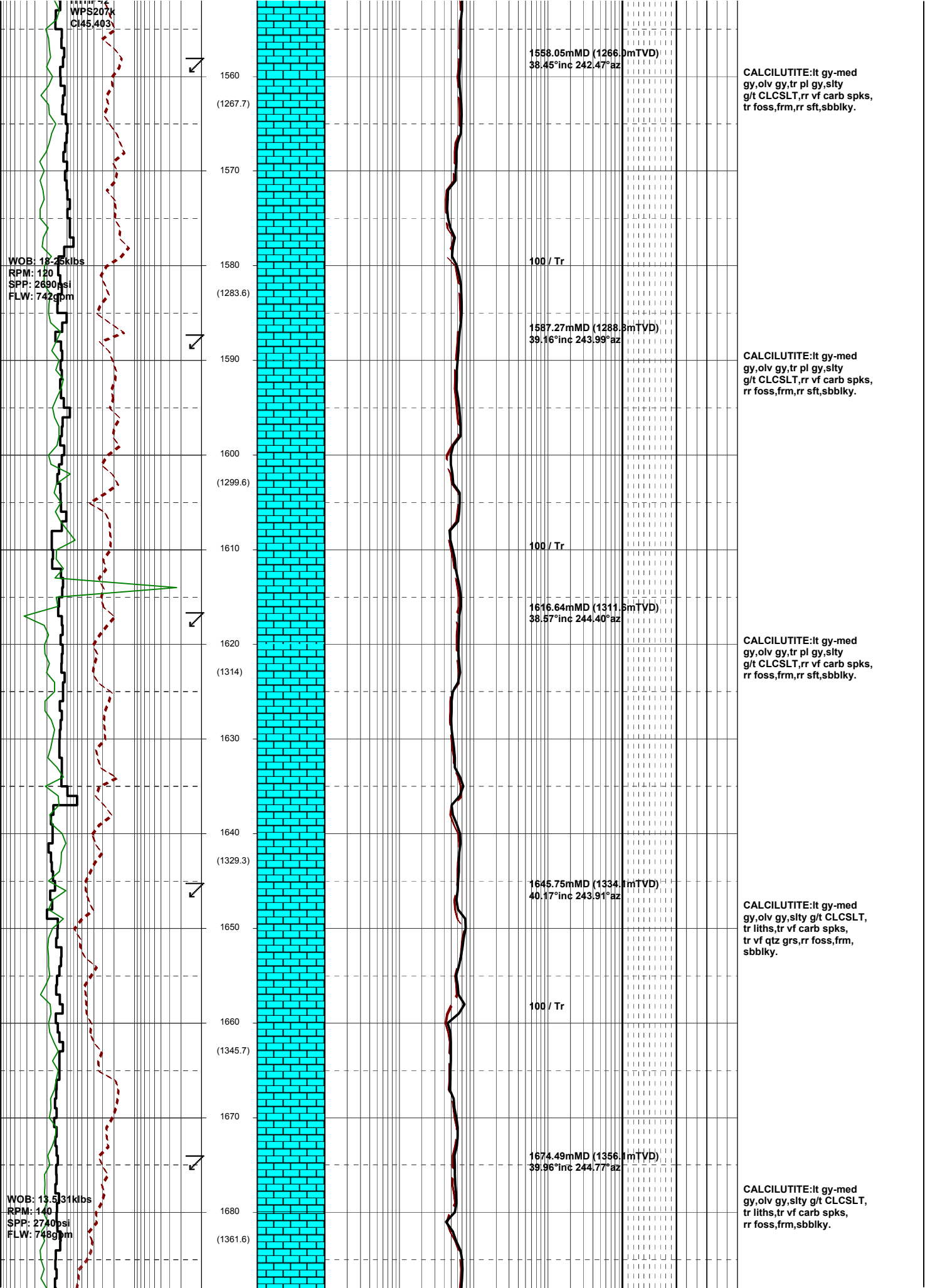
100 / Tr

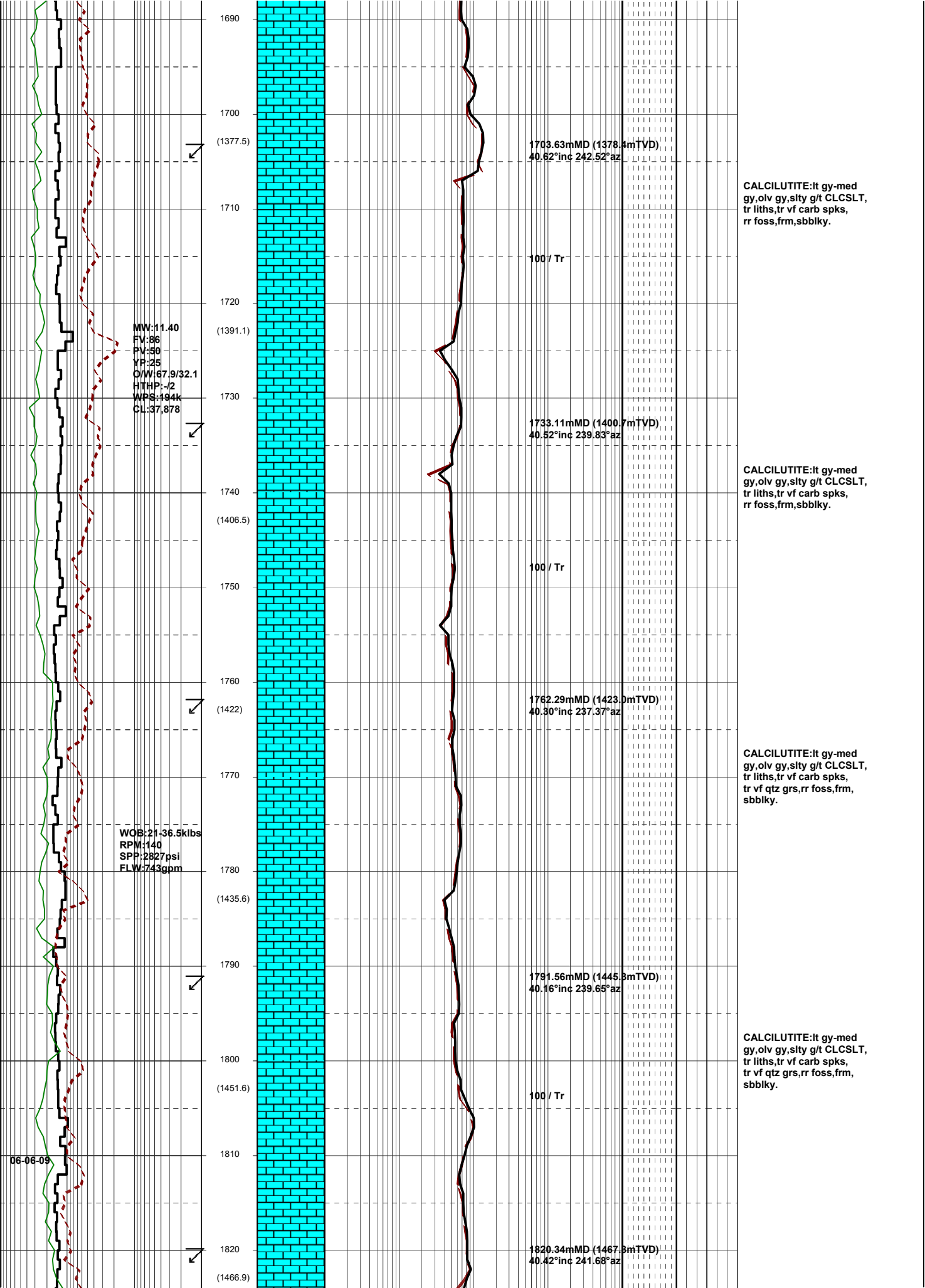
1528.91mMD (1243.1mTVD)
38.11°inc 242.53°az

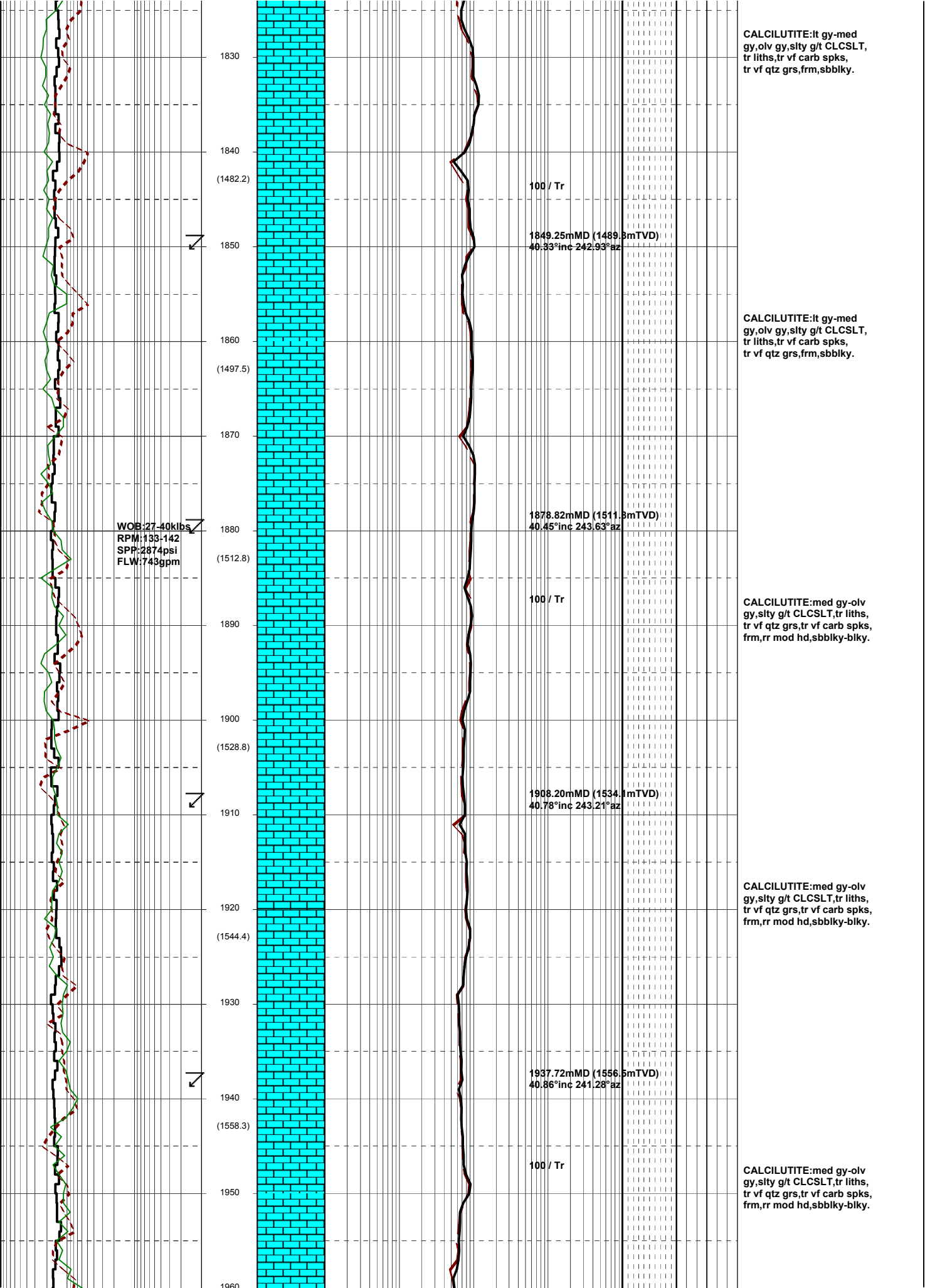
CALCILUTITE:lt gy-med
gy,olv gy,tr pl gy,silty
g/t CLCSLT,rr vf carb spks,
rr foss,frm,rr sft,sbbiky.

100 / Tr

MW11.4
FV94
PV49
YP25
O/W65.4/34.6
UTHP 12







CALCILUTITE:lt gy-med gy,olv gy,silty g/t CLCSLT, tr liths,tr vf carb spks, tr vf qtz grs,frm,sbbilky.

1830

1840

(1482.2)

1850

1860

(1497.5)

1870

1880

(1512.8)

1890

1900

(1528.8)

1910

1920

(1544.4)

1930

1940

(1558.3)

1950

1960

100 / Tr

1849.25mMD (1489.8mTVD)
40.33°inc 242.93°az

1878.82mMD (1511.8mTVD)
40.45°inc 243.63°az

100 / Tr

1908.20mMD (1534.1mTVD)
40.78°inc 243.21°az

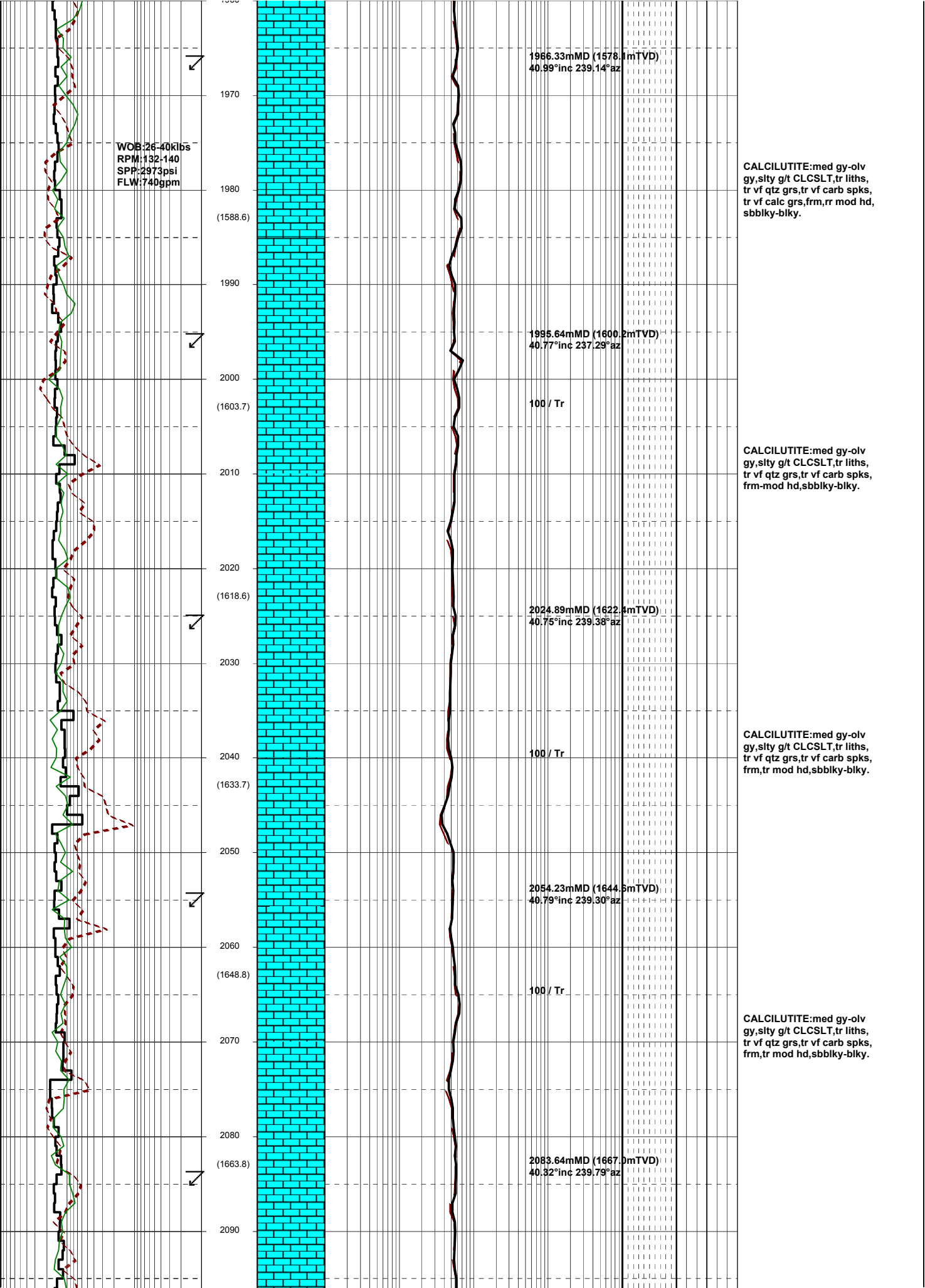
CALCILUTITE:lt gy-med gy,olv gy,silty g/t CLCSLT, tr liths,tr vf carb spks, tr vf qtz grs,frm,sbbilky.

CALCILUTITE:med gy-olv gy,silty g/t CLCSLT,tr liths, tr vf qtz grs,tr vf carb spks, frm,rr mod hd,sbbilky-blky.

CALCILUTITE:med gy-olv gy,silty g/t CLCSLT,tr liths, tr vf qtz grs,tr vf carb spks, frm,rr mod hd,sbbilky-blky.

CALCILUTITE:med gy-olv gy,silty g/t CLCSLT,tr liths, tr vf qtz grs,tr vf carb spks, frm,rr mod hd,sbbilky-blky.

WOB: 27-40kibs
RPM: 133-142
SPP: 2874psi
FLW: 743gpm



WOB:31-39klbs
RPM:138
SPP:3095psi
FLW:742gpm

2100

(1678.8)

2110

(1694.9)

2130

2140

(1710.3)

2150

2160

(1725.8)

2170

2180

(1739.8)

2190

2200

(1755.2)

2210

2220

(1770.4)

2230

WOB:25-33klbs
RPM:142
SPP:2112psi

100 / Tr

2112.30mMD (1688.8mTVD)
40.67°inc 240.15°az

100 / Tr

2141.57mMD (1710.9mTVD)
40.83°inc 239.65°az

100 / Tr

2170.98mMD (1733.2mTVD)
40.80°inc 240.16°az

100 / Tr

2200.28mMD (1755.4mTVD)
40.82°inc 239.6°az

100 / Tr

2229.66mMD (1777.5mTVD)
40.72°inc 240.77°az

CALCILUTITE:lt olv gy-med gy,mnr olv gy,silty g/t CLCSLT,tr liths,tr vf qtz grs, tr vf carb spks,rr carb lams, sft-frm,tr mod hd,sbbiky-blky.

CALCILUTITE:lt olv gy-med gy,mnr olv gy,silty g/t CLCSLT,tr liths,tr vf qtz grs, tr vf carb spks,sft-frm, tr mod hd,sbbiky-blky.

CALCILUTITE:lt olv gy-med gy,mnr olv gy,rr sity g/t CLCSLT,tr liths,tr vf qtz grs, tr vf carb spks,sft-frm, tr mod hd,sbbiky-blky.

CALCILUTITE:lt olv gy-med gy,tr slty g/t CLSLT,tr liths,tr vf qtz grs,tr vf carb spks,sft-frm,rr mod hd,sbbiky-blky.

CALCILUTITE:lt olv gy-med gy,tr slty g/t CLSLT,tr liths,tr vf qtz grs,tr vf carb spks,sft-frm,rr mod hd,sbbiky-blky.

SPP:329psi
FLW:741gpm

2240
(1785.5)
2250
2260
(1800.5)
2270
2280
(1815.8)
2290
2300
(1831)
2310
2320
(1845.9)
2330
2340
(1861.4)
2350
2360
(1876.7)

WOB:33-37klbs
RPM:141
SPP:329psi
FLW:739gpm

100 / Tr
2258.27mMD (1799.8mTVD)
40.84°inc 240.33°az
100 / Tr
2287.74mMD (1821.5mTVD)
40.60°inc 240.49°az
100 / Tr
2317.02mMD (1843.9mTVD)
40.49°inc 241.10°az
100 / Tr
2346.41mMD (1866.2mTVD)
40.47°inc 241.58°az
100 / Tr

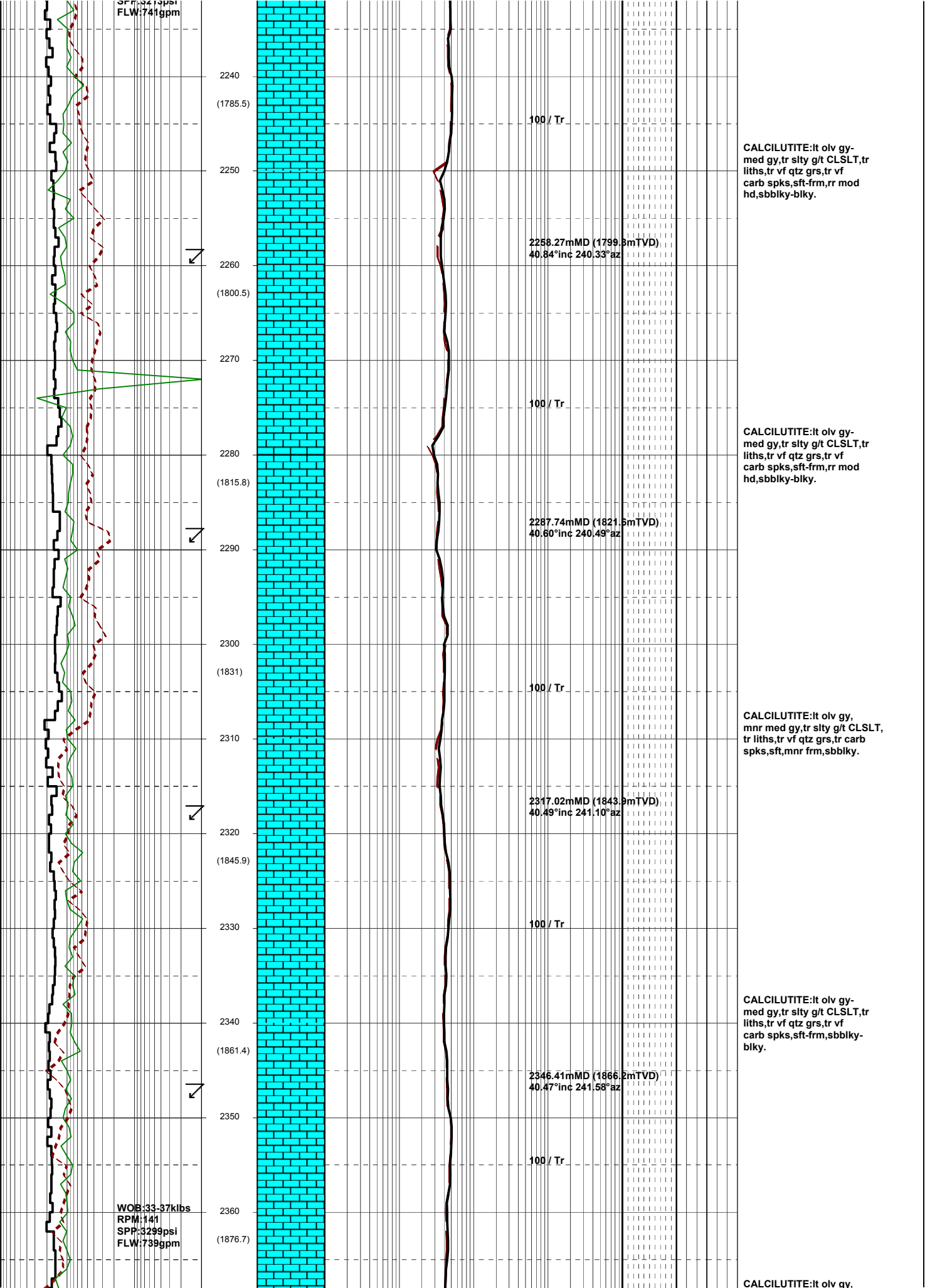
CALCILUTITE:it olv gy-
med gy,tr slty g/t CLSLT,tr
liths,tr vf qtz grs,tr vf
carb spks,sft frm,rr mod
hd,sbbiky-blky.

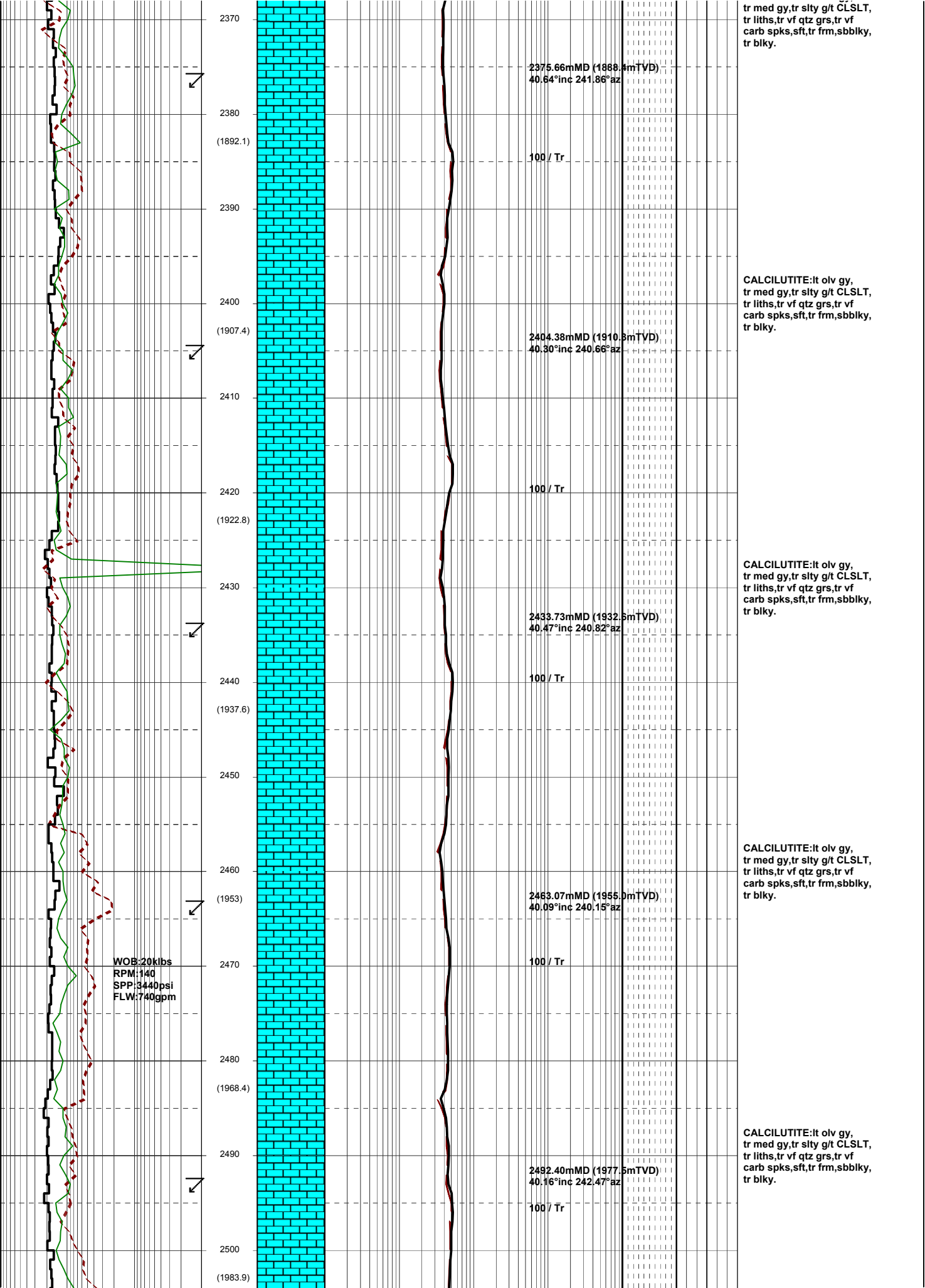
CALCILUTITE:it olv gy-
med gy,tr slty g/t CLSLT,
tr liths,tr vf qtz grs,tr vf
carb spks,sft frm,rr mod
hd,sbbiky-blky.

CALCILUTITE:it olv gy,
mnr med gy,tr slty g/t CLSLT,
tr liths,tr vf qtz grs,tr carb
spks,sft,mnr frm,sbbiky.

CALCILUTITE:it olv gy-
med gy,tr slty g/t CLSLT,
tr liths,tr vf qtz grs,tr vf
carb spks,sft frm,sbbiky-
blky.

CALCILUTITE:it olv gy.





2370
(1892.1)
2380
2390
2400
(1907.4)
2410
2420
(1922.8)
2430
2440
(1937.6)
2450
2460
(1953)
2470
2480
(1968.4)
2490
2500
(1983.9)

2375.66mMD (1888.4mTVD)
40.64°inc 241.86°az

100 / Tr

2404.38mMD (1910.8mTVD)
40.30°inc 240.66°az

100 / Tr

2433.73mMD (1932.5mTVD)
40.47°inc 240.82°az

100 / Tr

2463.07mMD (1955.0mTVD)
40.09°inc 240.15°az

100 / Tr

2492.40mMD (1977.5mTVD)
40.16°inc 242.47°az

100 / Tr

tr med gy, tr silty g/t CLSLT,
tr liths, tr vf qtz grs, tr vf
carb spks, sft, tr frm, sbbkly,
tr blkly.

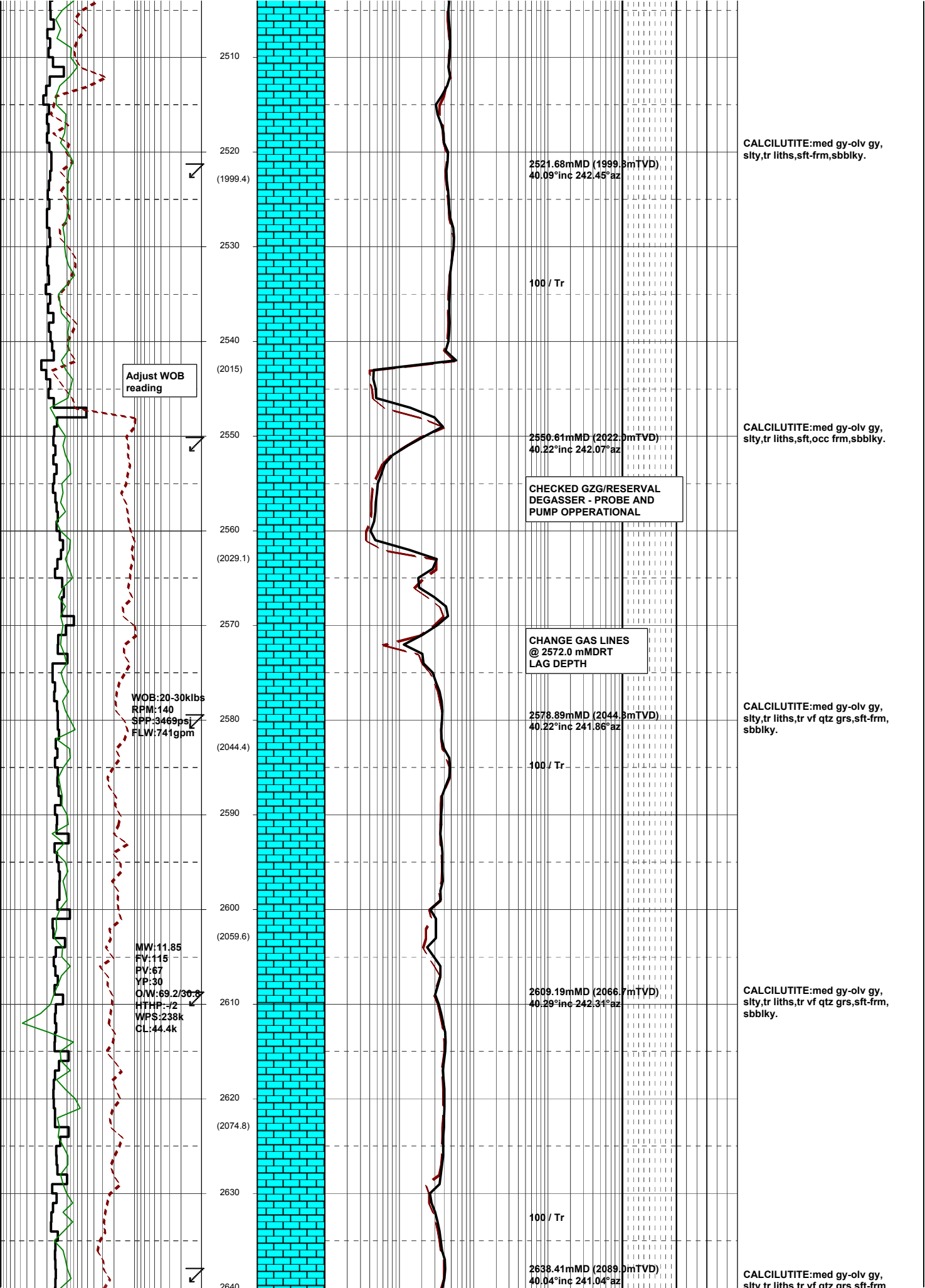
CALCILUTITE: it olv gy,
tr med gy, tr silty g/t CLSLT,
tr liths, tr vf qtz grs, tr vf
carb spks, sft, tr frm, sbbkly,
tr blkly.

CALCILUTITE: it olv gy,
tr med gy, tr silty g/t CLSLT,
tr liths, tr vf qtz grs, tr vf
carb spks, sft, tr frm, sbbkly,
tr blkly.

CALCILUTITE: it olv gy,
tr med gy, tr silty g/t CLSLT,
tr liths, tr vf qtz grs, tr vf
carb spks, sft, tr frm, sbbkly,
tr blkly.

CALCILUTITE: it olv gy,
tr med gy, tr silty g/t CLSLT,
tr liths, tr vf qtz grs, tr vf
carb spks, sft, tr frm, sbbkly,
tr blkly.

WOB: 20klbs
RPM: 140
SPP: 3440psi
FLW: 740gpm



2510

2520

2530

2540

2550

2560

2570

2580

2590

2600

2610

2620

2630

2640

(1999.4)

(2015)

(2029.1)

(2044.4)

(2059.6)

(2074.8)

2521.68mMD (1999.3mTVD)
40.09°inc 242.45°az

100 / Tr

2550.61mMD (2022.0mTVD)
40.22°inc 242.07°az

CHECKED GZG/RESERVAL
DEGASSER - PROBE AND
PUMP OPERATIONAL

CHANGE GAS LINES
@ 2572.0 mMDRT
LAG DEPTH

2578.89mMD (2044.3mTVD)
40.22°inc 241.86°az

100 / Tr

2609.19mMD (2066.7mTVD)
40.29°inc 242.31°az

100 / Tr

2638.41mMD (2089.0mTVD)
40.04°inc 241.04°az

Adjust WOB
reading

WOB:20-30klbs
RPM:140
SPP:3469psi
FLW:741gpm

MW:11.85
FV:115
PV:67
YP:30
Q/W:69.2/30.8
HTHP:-/2
WPS:238k
CL:44.4k

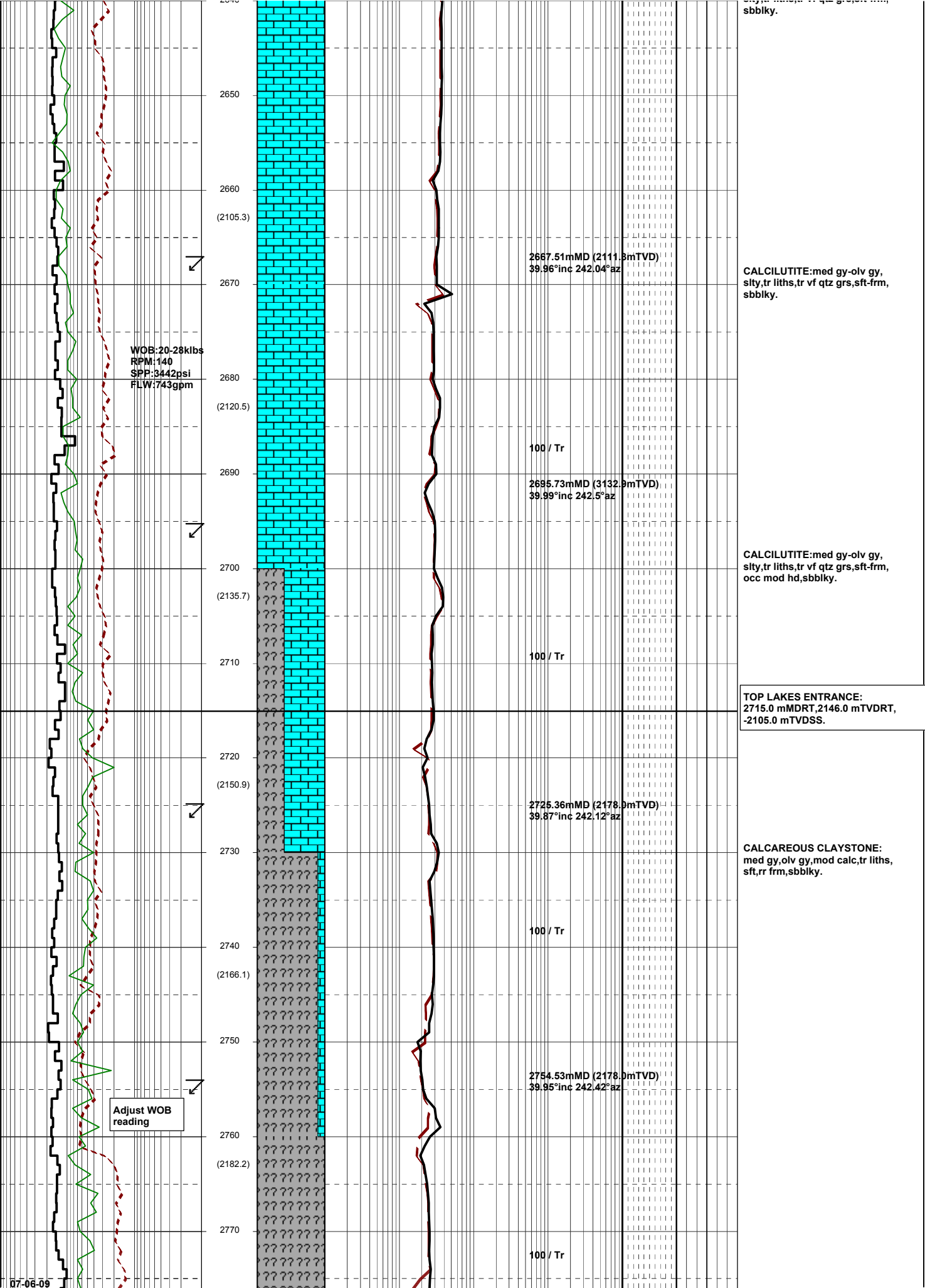
CALCILUTITE: med gy-olv gy,
slty, tr liths, sft frm, sbbkly.

CALCILUTITE: med gy-olv gy,
slty, tr liths, sft, occ frm, sbbkly.

CALCILUTITE: med gy-olv gy,
slty, tr liths, tr vf qtz grs, sft frm,
sbbkly.

CALCILUTITE: med gy-olv gy,
slty, tr liths, tr vf qtz grs, sft frm,
sbbkly.

CALCILUTITE: med gy-olv gy,
slty, tr liths, tr vf qtz grs, sft frm



WOB:19-31klbs
RPM:140
SPP:3501psi
FLW:745gpm

2780
(2197.5)
2790
2800
(2212.7)
2810
2820
(2228.1)
2830
2840
(2243.4)
2850
2860
(2258.7)
2870
2880
(2274.3)
2890
2900
(2288.7)
2910

2783.88mMD (2200.5mTVD)
39.95°inc 242.84°az

2813.48mMD (2223.2mTVD)
39.91°inc 242.69°az

2842.18mMD (2245.2mTVD)
39.98°inc 242.68°az

2871.45mMD (2267.8mTVD)
39.99°inc 243.49°az

2900.70mMD (2290.1mTVD)
39.99°inc 243.44°az

CALCAREOUS CLAYSTONE:
med gy,olv gy,mod calc,tr liths,
sft,rr frm,sbbiky-sbfiss.

CALCAREOUS CLAYSTONE:
med gy,olv gy,mod calc,tr liths,
sft,rr frm,sbbiky-sbfiss.

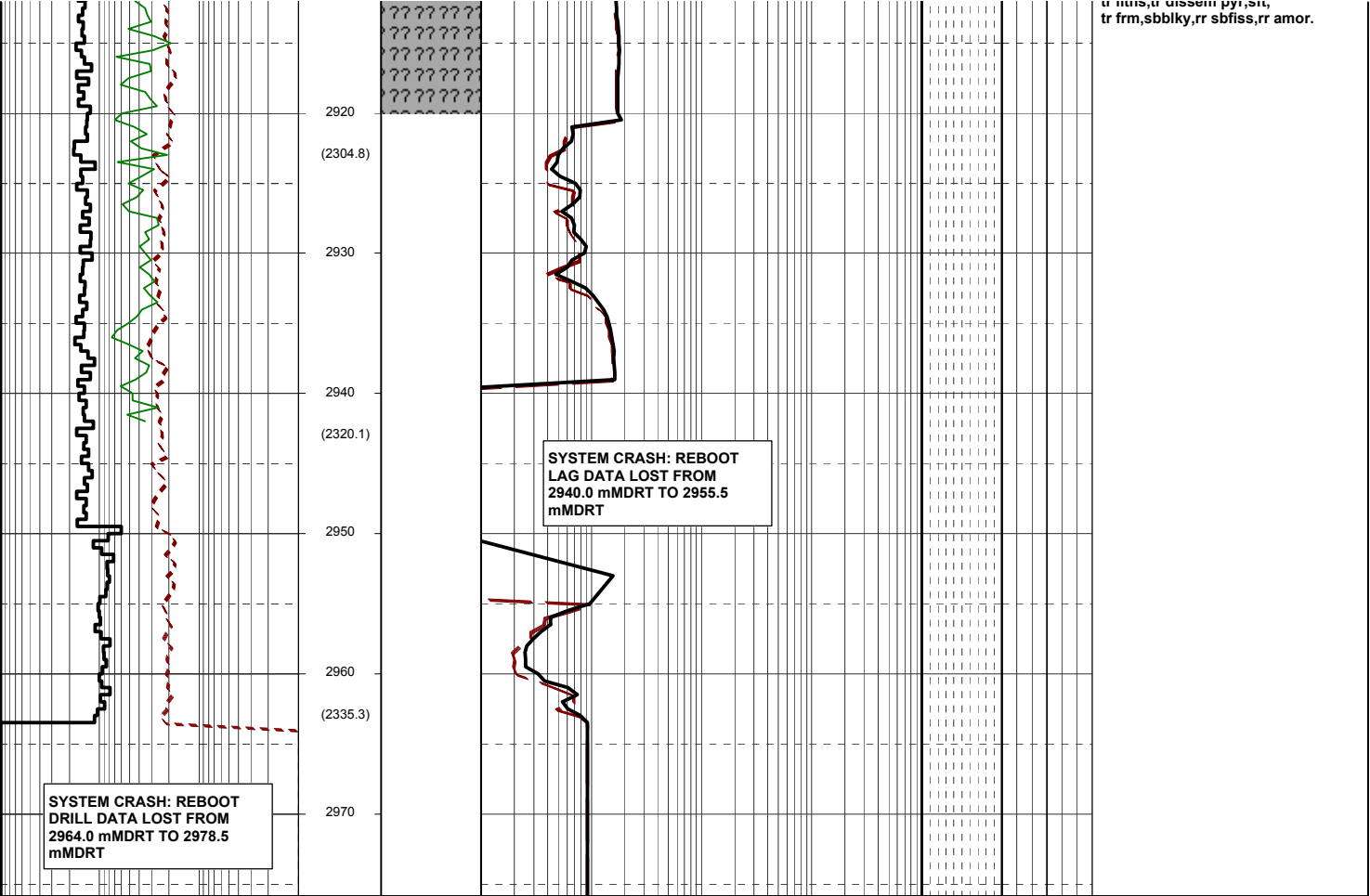
CALCAREOUS CLAYSTONE:
med gy,olv gy,mod calc,tr liths,
sft,rr frm,sbbiky-sbfiss.

CALCAREOUS CLAYSTONE:
med gy,lt olv gy-olv gy,mod calc,
tr liths,rr frm,sbbiky-sbfiss.

Adjust WOB
reading

ATTEMPT TO
REPOSITION PROBE

WOB:18-28klbs
RPM:140
SPP:3526psi
FLW:739gpm



2920
(2304.8)
2930
2940
(2320.1)
2950
2960
(2335.3)
2970

SYSTEM CRASH: REBOOT
LAG DATA LOST FROM
2940.0 mMDRT TO 2955.5
mMDRT

SYSTEM CRASH: REBOOT
DRILL DATA LOST FROM
2964.0 mMDRT TO 2978.5
mMDRT

u nius,ti disse m pyi,si,
tr frm,sbbiky,rr sbfiss,rr amor.